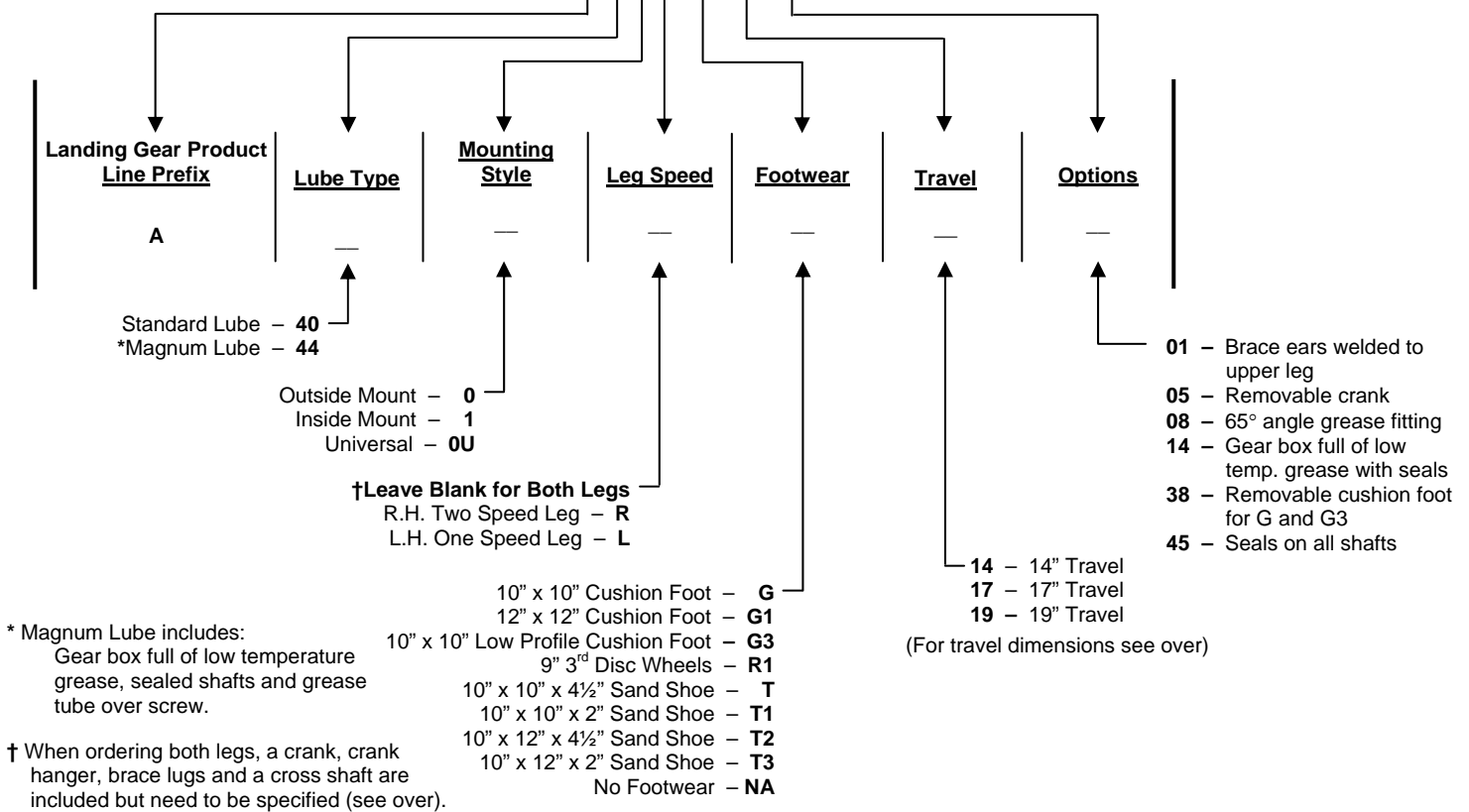
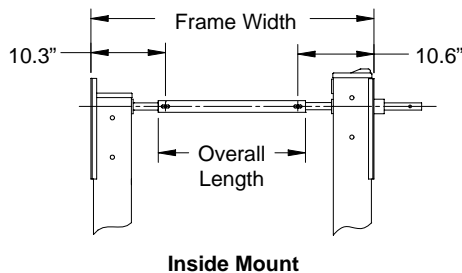
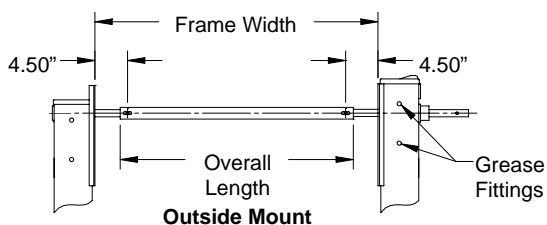


Example: **A400R T1 17 08**



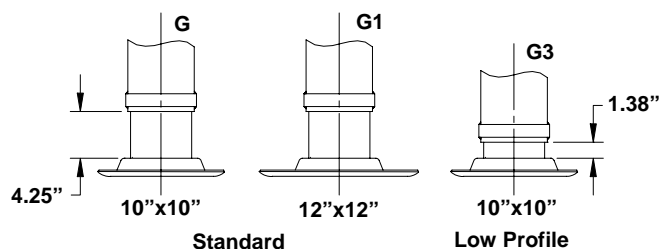
For parts and accessories (see over).

## Mounting Style

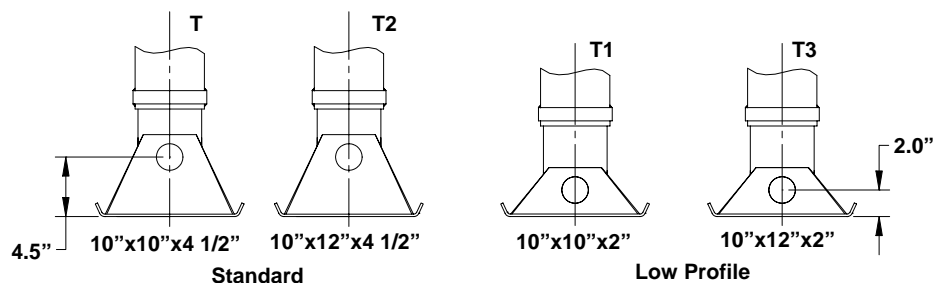


Note:  
Grease fittings always face towards the front with the roadside crank.

## Cushion Foot - "G" Series



## Sand Shoe - "T" Series

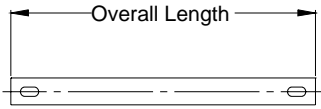


The right to alter specifications is reserved.

Page 1 of 2

## Standard Accessories

### Cross Shaft



Example: **B10363.59.4**

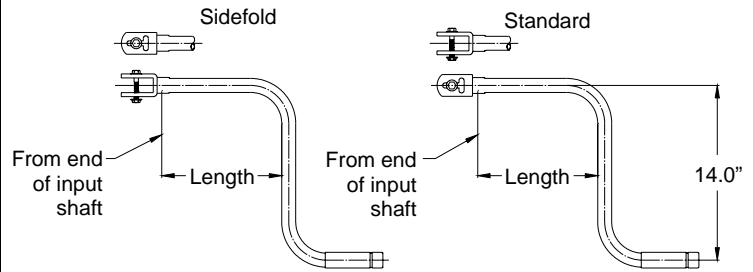
Inside Mount - **B10363**  
 Outside Mount - **B10066**

**Overall Length (in)**  
 Standard Inside Mount= 56.5"  
 Standard Outside Mount= 68.4"  
 (If other length is desired see note below).

Note:  
 Overall length = Frame width - 19.5" (for inside mount)  
 - 7.6" (for outside mount)

Inside Mount Example: 78.9" - 19.5" = 59.4"  
 Frame Width = 78.9" Overall Length = 59.4"

### Crank

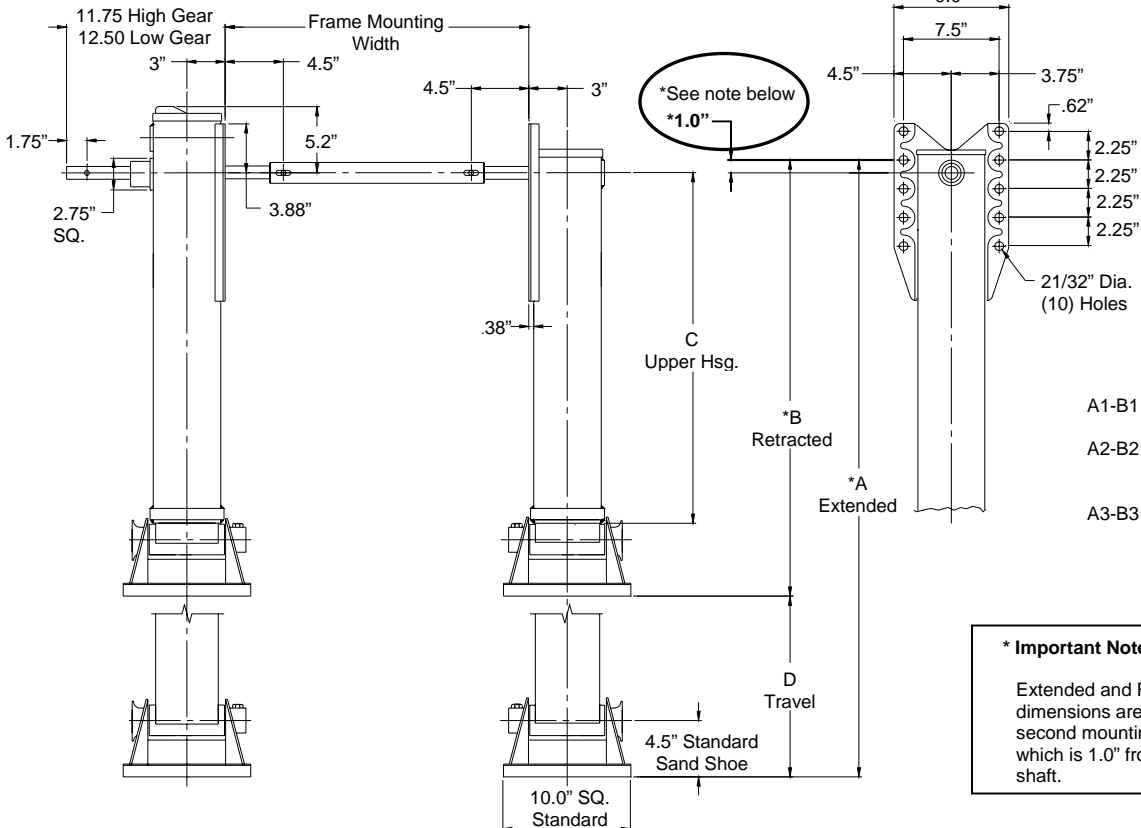


Example: **C10592.1**

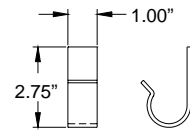
Standard - **C10592**  
 Sidefold - **C10591**

**Length**  
 1 - 5 1/4"  
 2 - 8 1/4" (Standard)  
 3 - 10 1/2"  
 4 - 17 3/4"  
 5 - 14 3/4"

## Travel Dimensions



## Crank Hanger



Order Number  
**B10261**

- A1-B1 = Standard Footwear
- A2-B2 = Low Profile (Sand Shoe)
- A3-B3 = Low Profile (Cushion Foot)

### \* Important Note:

Extended and Retracted dimensions are located from second mounting hole as shown, which is 1.0" from centerline of shaft.

D Travel	*Standard Footwear		*Low Profile (Sand Shoe)		*Low Profile (Cushion Foot)		C Upper Hsg.
	A1-Extended	B1-Retracted	A2-Extended	B2-Retracted	A3-Extended	B3-Retracted	
14"	42 5/8"	28 5/8"	40 1/8"	26 1/8"	39 3/4"	25 3/4"	21 15/16"
17"	48 5/8"	31 5/8"	46 1/8"	29 1/8"	45 3/4"	28 3/4"	24 15/16"
19"	52 5/8"	33 5/8"	50 1/8"	31 1/8"	49 3/4"	30 3/4"	26 15/16"