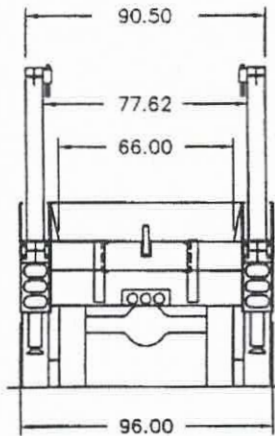
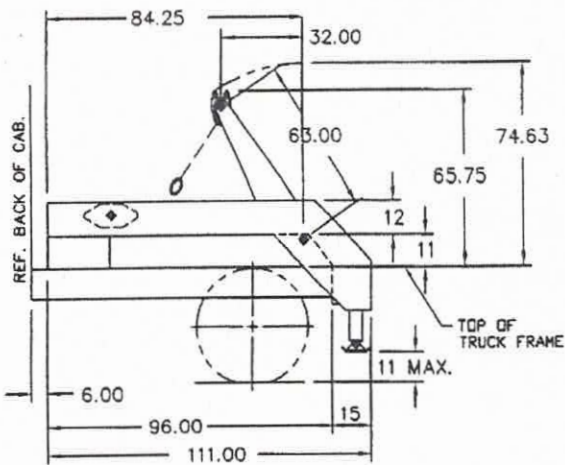


Model: HL-17-63

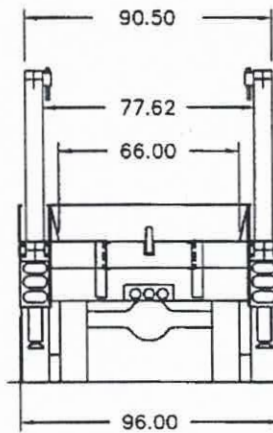
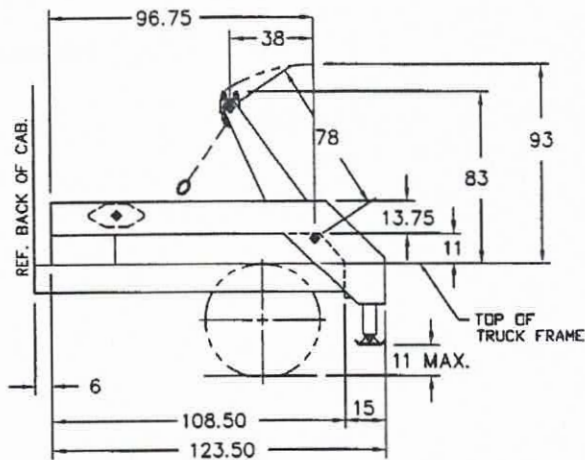


Gross Lifting Capacity.....17,000 lbs
 Standard Capacity Sizes.....4-8 yd³
 Approximate Weight.....4,200 lbs
 Hydraulic Pump Capacity @ 1200 rpm.....24 gpm
 Operating Pressure.....2,500 psi
 Arm Cylinders6" x 2.5" x 34"
 Jackleg Stabilizers.....4.5" x 4" x 11"
 Cycle Time Up @ 1200 rpm.....17 sec
 Cycle Time Down @ 1200 rpm.....19 sec

Minimum Truck Requirements

Front Axle.....11,000 lbs
 Rear Axle.....22,000 lbs
 GVW.....33,000 lbs
 B.O.C. to C/L of Rear Axle.....72 in
 B.O.C. to End of Frame.....103.5 in

Model: HL-20-78

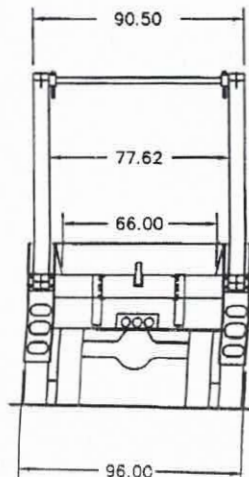
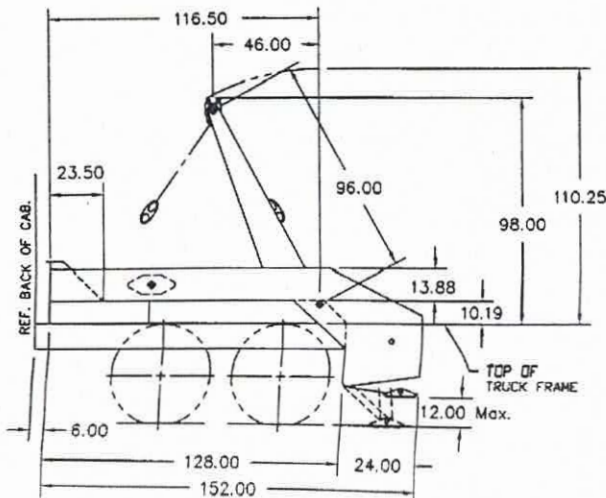


Gross Lifting Capacity.....20,000 lbs
 Standard Capacity Sizes.....5-10 yd³
 Approximate Weight.....5,000 lbs
 Hydraulic Pump Capacity @ 1200 rpm.....24 gpm
 Operating Pressure.....2,500 psi
 Arm Cylinders7" x 2.5" x 34"
 Jackleg Stabilizers.....4.5" x 4" x 11"
 Cycle Time Up @ 1200 rpm.....28 sec
 Cycle Time Down @ 1200 rpm.....32 sec

Minimum Truck Requirements

Front Axle.....12,000 lbs
 Rear Axle.....25,000 lbs
 GVW.....37,000 lbs
 B.O.C. to C/L of Rear Axle.....84 in
 B.O.C. to End of Frame.....115.5 in

Model: HL-30-96

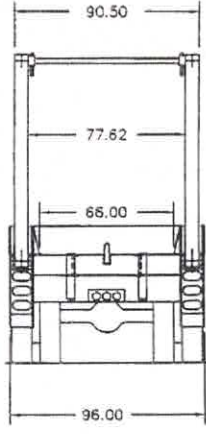
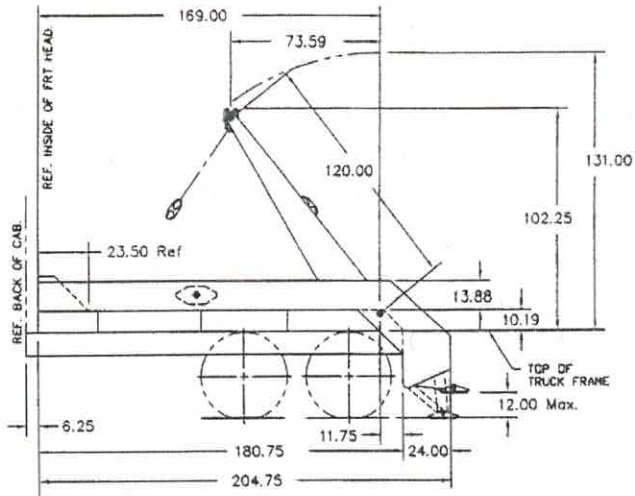


Gross Lifting Capacity.....30,000 lbs
 Standard Capacity Sizes.....6-12 yd³
 Approximate Weight.....5,700 lbs
 Hydraulic Pump Capacity @ 1200 rpm.....24 gpm
 Operating Pressure.....2,500 psi
 Arm Cylinders7" x 2.5" x 42.5"
 Jackleg Stabilizers.....4.5" x 4" x 11"
 Cycle Time Up @ 1200 rpm.....32 sec
 Cycle Time Down @ 1200 rpm.....36 sec

Minimum Truck Requirements

Front Axle.....16,000 lbs
 Rear Axle.....38,000 lbs
 GVW.....54,000 lbs
 B.O.C. to C/L of Tandem.....84 in
 B.O.C. to End of Frame.....135 in

Model: HL-30-120

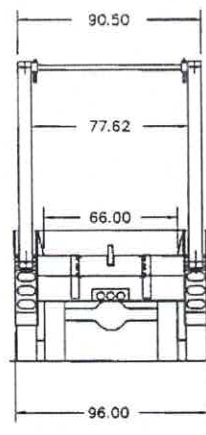
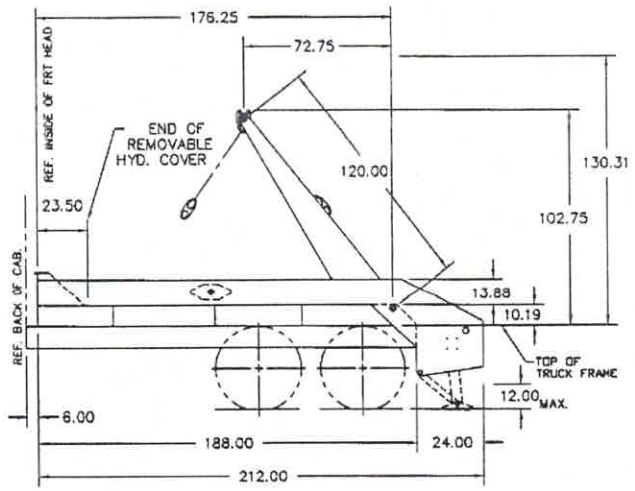


- Gross Lifting Capacity.....30,000 lbs
- Standard Capacity Sizes.....10-20 yd³
- Approximate Weight.....7,400 lbs
- Hydraulic Pump Capacity @ 1200 rpm.....24 gpm
- Operating Pressure.....2,500 psi
- Arm Cylinders7.5" x 2.5" x 47.5"
- Jackleg Stabilizers.....4.5" x 4" x 11"
- Cycle Time Up @ 1200 rpm.....36 sec
- Cycle Time Down @ 1200 rpm.....41 sec

Minimum Truck Requirements

- Front Axle.....16,000 lbs
- Rear Axle.....38,000 lbs
- GVW.....54,000 lbs
- B.O.C. to C/L of Tandem.....138 in
- B.O.C. to End of Frame.....188 in

Model: HL-40-120

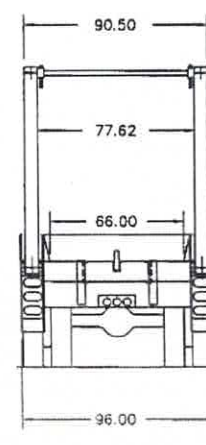
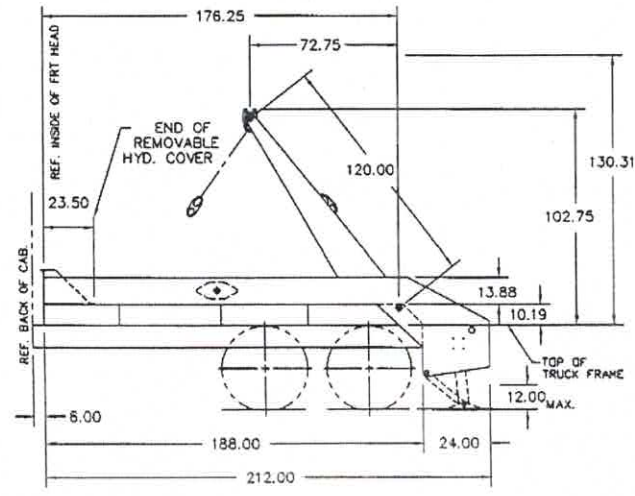


- Gross Lifting Capacity.....40,000 lbs
- Standard Capacity Sizes.....10-28 yd³
- Approximate Weight.....7,900 lbs
- Hydraulic Pump Capacity @ 1200 rpm.....29 gpm
- Operating Pressure.....2,500 psi
- Arm Cylinders8" x 3" x 59.5"
- Jackleg Stabilizers.....4.5" x 4" x 11"
- Cycle Time Up @ 1200 rpm.....43 sec
- Cycle Time Down @ 1200 rpm.....50 sec

Minimum Truck Requirements

- Front Axle.....18,000 lbs
- Rear Axle.....44,000 lbs
- GVW.....62,000 lbs
- B.O.C. to C/L of Tandem.....144 in
- B.O.C. to End of Frame.....194 in

Model: HL-50-120

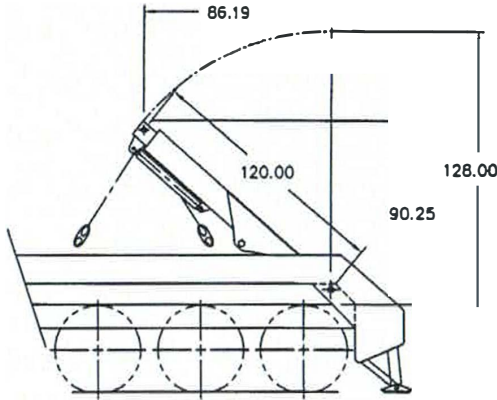


- Gross Lifting Capacity.....50,000 lbs
- Standard Capacity Sizes.....10-28 yd³
- Approximate Weight.....9,800 lbs
- Hydraulic Pump Capacity @ 1200 rpm.....33 gpm
- Operating Pressure.....2,500 psi
- Arm Cylinders8" x 3.5" x 59.5"
- Jackleg Stabilizers.....4.5" x 4" x 11"
- Cycle Time Up @ 1200 rpm.....53 sec
- Cycle Time Down @ 1200 rpm.....47 sec

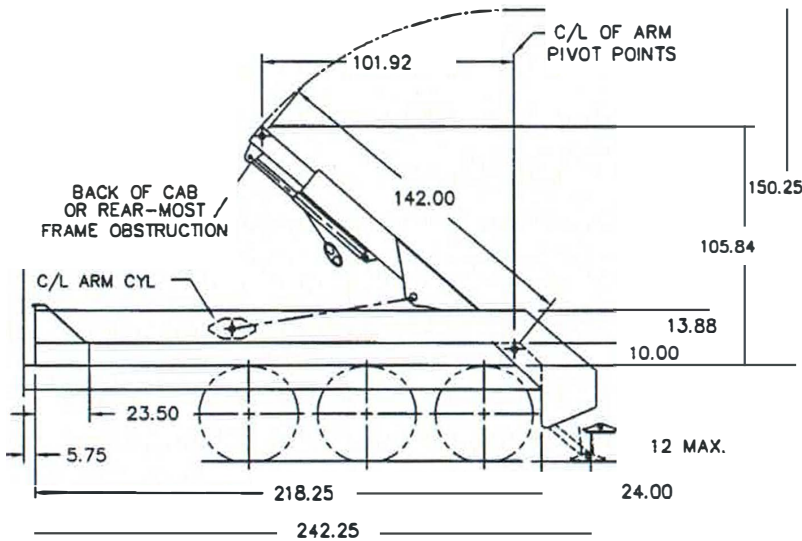
Minimum Truck Requirements

- Front Axle.....20,000 lbs
- Rear Axle.....44,000 lbs
- GVW.....64,000 lbs
- B.O.C. to C/L of Tandem.....144 in
- B.O.C. to End of Frame.....194 in

SHOWN WITH ARM CYL. RETRACTED



SHOWN WITH ARM CYL. EXTENDED



Model: HL-40-142E
THIS MODEL REQUIRES A TRI-AXLE CHASSIS

Gross Lifting Capacity.....40,000 lbs
 Standard Capacity Sizes.....8-22 yd³
 Approximate Weight.....11,700 lbs
 Hydraulic Pump Capacity @ 1200 rpm.....33 gpm
 Operating Pressure.....2,500 psi
 Arm Cylinders8" x 3" x 66"
 Arm Extend Cylinders.....3.5" x 2.5" x 22.12"
 Jackleg Stabilizers.....4.5" x 4" x 11"
 Cycle Time Up @ 1200 rpm.....53 sec
 Cycle Time Down @ 1200 rpm.....46 sec

Minimum Truck Requirements

Front Axle.....20,000 lbs
 Rear Axle.....44,000 lbs
 GVW.....64,000 lbs
 B.O.C. to C/L of Tandem.....174 in
 B.O.C. to End of Frame.....224.5 in

